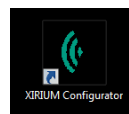


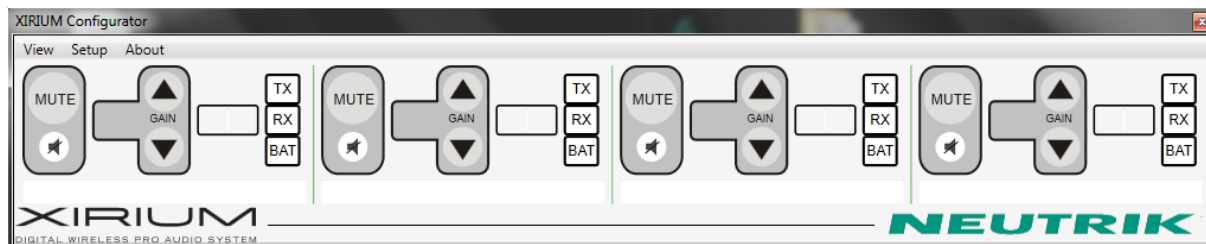


1. **Installation and Setup:** refer to document: *Installation and Setup of XIRIUM Configurator*

2. **Start XIRIUM Configurator:** double click on the ICON ->

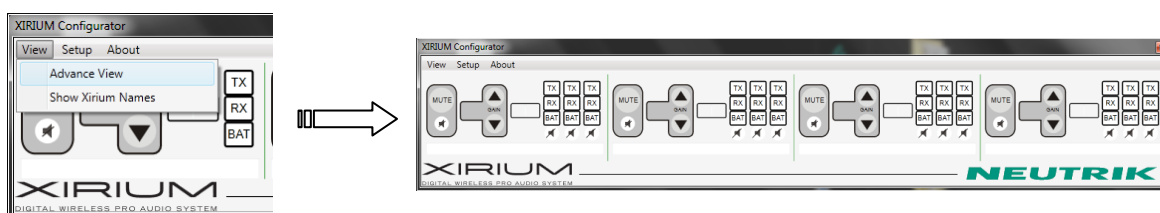


3. **User Interface (UI):**



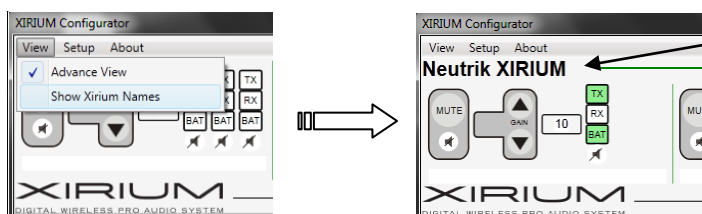
→ displaying TRX with no devices (TX or RX) associated

3.1. **View -> Advanced View:**



→ changes UI to advanced view, also displaying the RX Broadcast slots

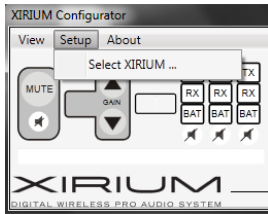
3.2. **View -> Show Xirium Names:**



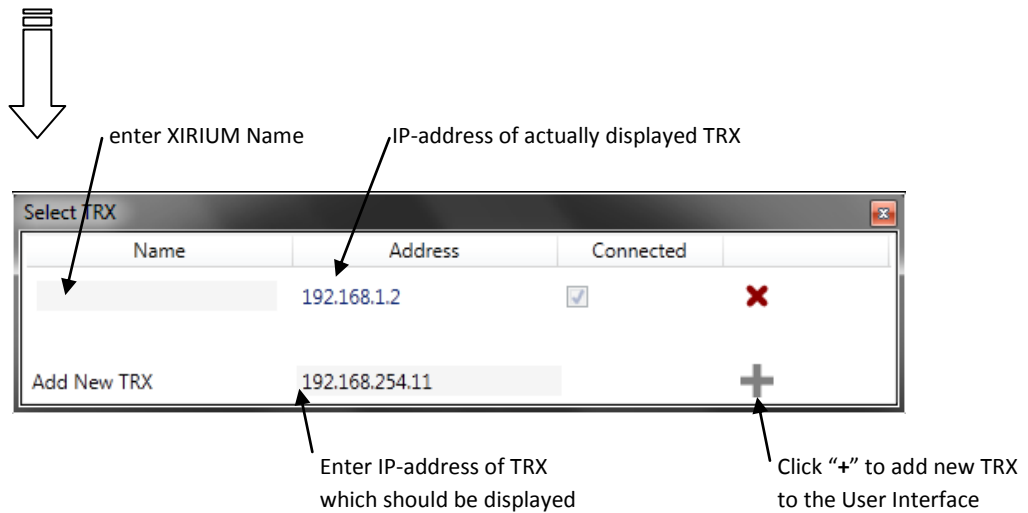
Xirium Name is displayed, which can be changed as desired, see: 3.3 Setup / Select XIRIUM ....



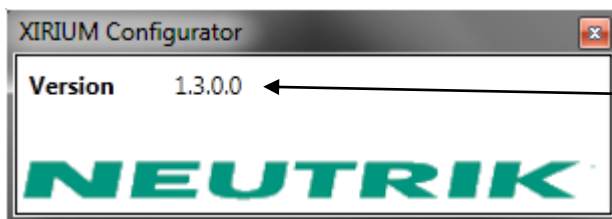
## 3.3. Setup -> Select XIRIUM ...



**Select XIRIUM** offers the possibility to directly address the desired TRX over LAN or within a network. To add a new TRX simply enter the IP-address of the TRX and click "+". The default IP-address of a new TRX (or after Factory Reset) is: 192.168.1.2  
Enter a TRX Name in the Field: **Name**



## 3.4. About

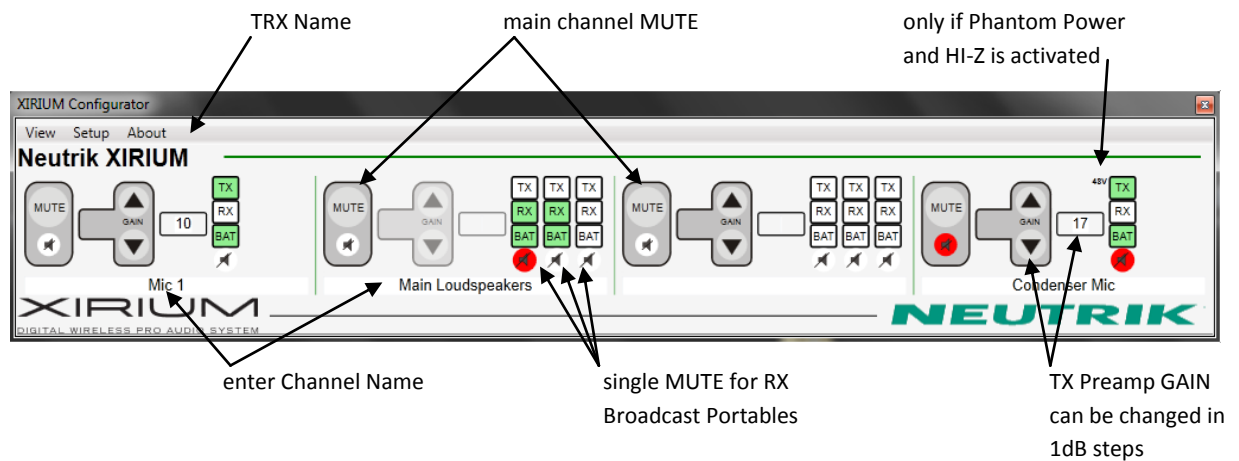


Displays the actual Software Version of the XIRIUM Configurator



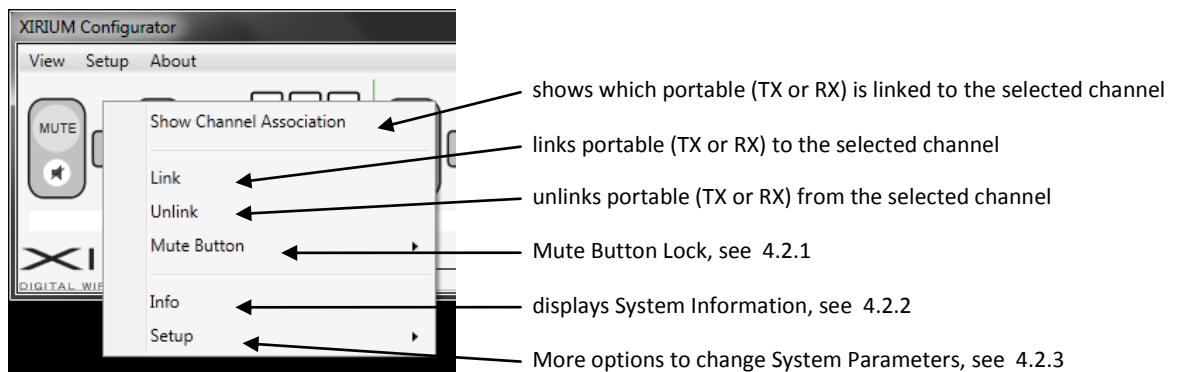
## 4. Using the XIRIUM Configurator

### 4.1. Main Display

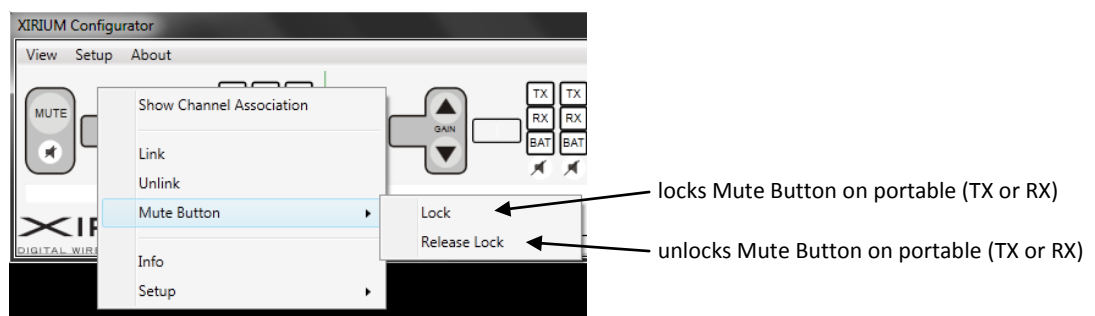


### 4.2. Working Menu

right click into the desired Audio Channel to open the Working Menu

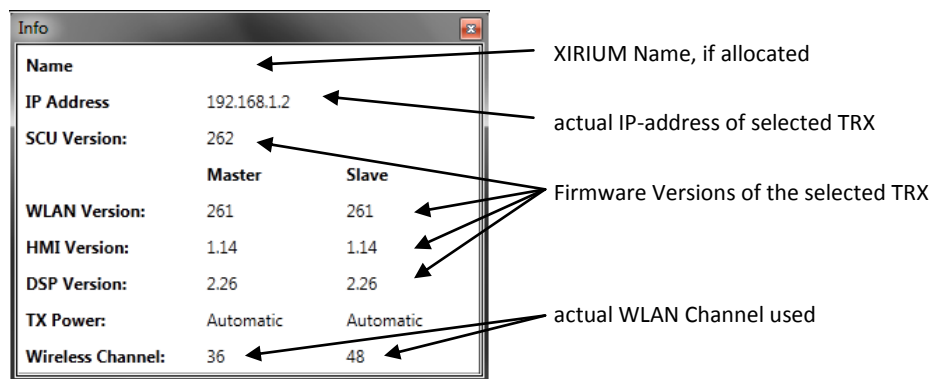


#### 4.2.1. Mute Button Lock

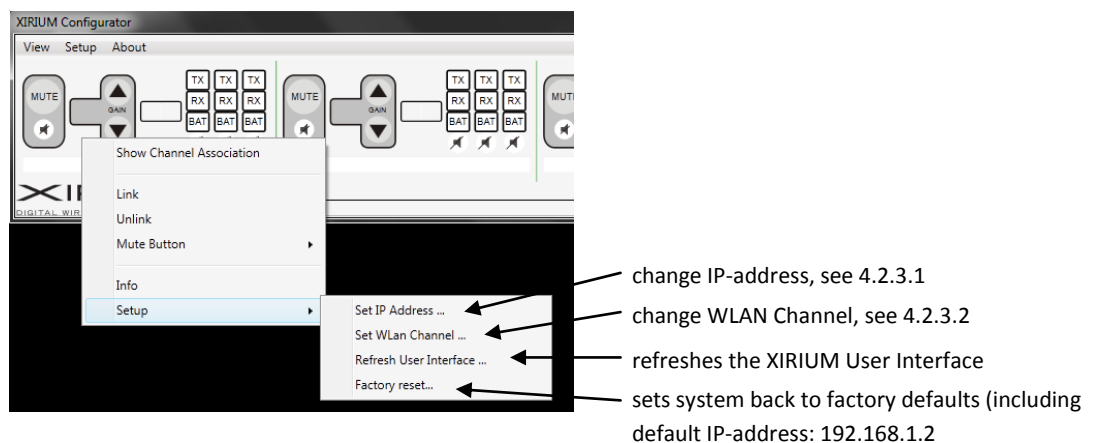




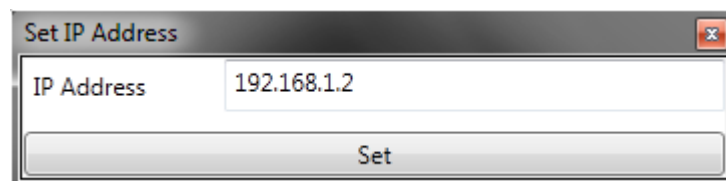
## 4.2.2. Info



## 4.2.3. Setup System Parameters



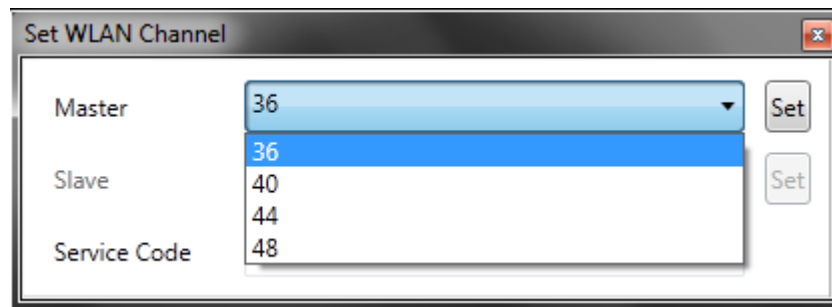
### 4.2.3.1. Change IP-Address



→ enter desired IP-address and click “Set”

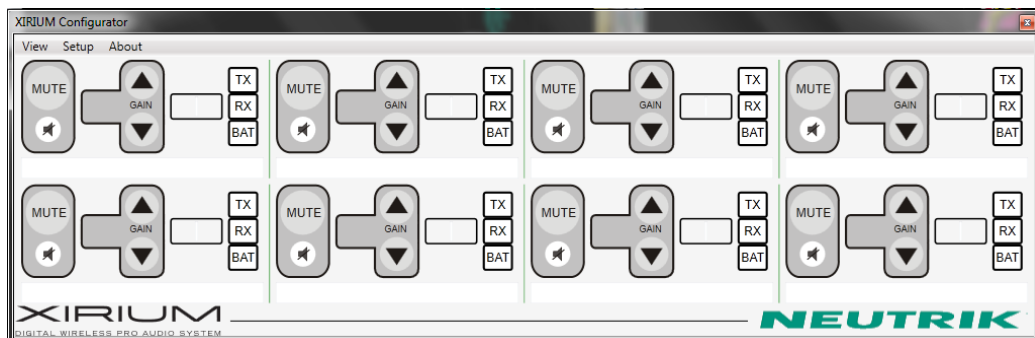


## 4.2.3.2. Change WLAN Channel



→ select the desired WLAN Channel and click “Set”

## 4.2.4. Master Slave Operation



→ in Master-Slave Operation the XIRIUM Configurator will automatically display both TRX base stations connected.

**NOTE:** The LAN cable has to be connected to the Master TRX. The valid IP-address is the one of the Master TRX (see 3.3 Select TRX or 4.2.2 Info)